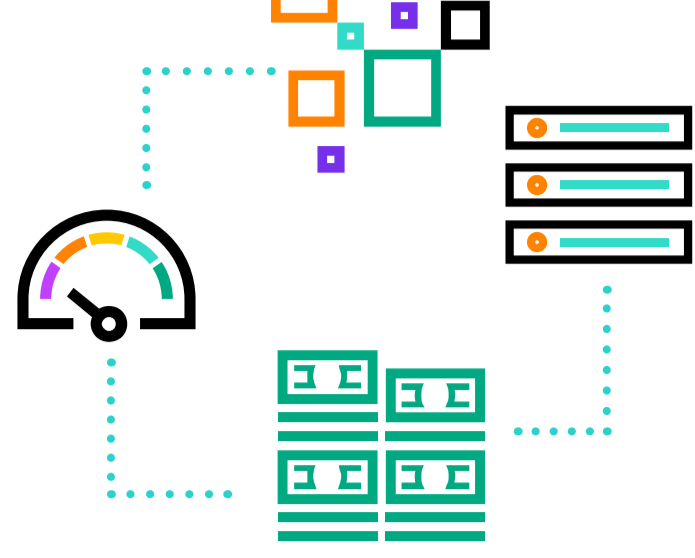


# Compute Resources to Power Your On-Premises Workloads with HPE GreenLake

Compute infrastructure is a business necessity. Yet, implementing servers and storage for on-premises environments is often a prolonged, complicated, and costly effort. Nothing cloud-like about it until now.



## The Challenges with On-Premises Compute

Acquiring, provisioning, and managing compute is a hassle.

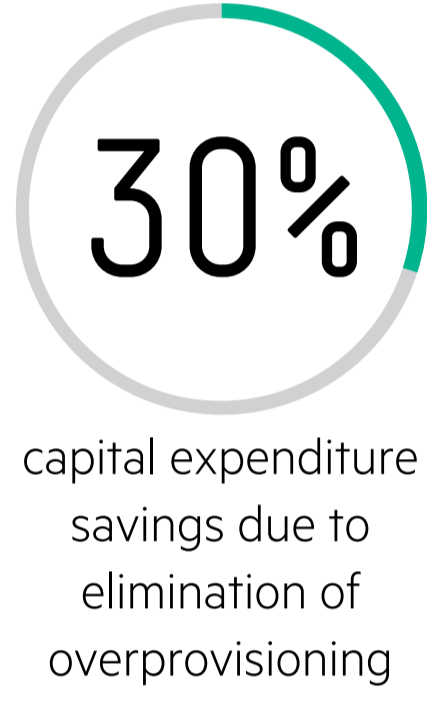
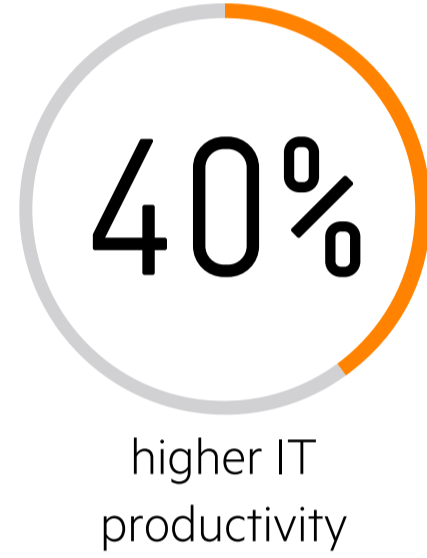
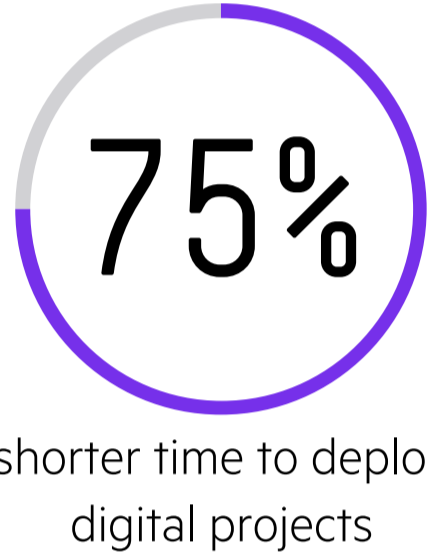
- 80% say on-premises provisioning is too slow
- 70% report capacity and utilization planning is a headache
- 68% say managing servers and storage is more difficult than expected

Source: 451 Research, Having Your Cake and Eating It Too, October 2019

## Increase Efficiency with Compute, Delivered as a Service

Achieve scalable, cost-effective, high-performance compute infrastructure in a consumption model for a wide range of workloads everywhere — edges, colocation, and data centers — with HPE GreenLake.

This results in:



Source: A commissioned study conducted by Forrester Consulting, The Total Economic Impact™ of HPE GreenLake, May 2020

## Have Compute Your Way

No matter your compute needs, HPE GreenLake can help you power any on-premises workload — all delivered in as little as 14 days, on a pay-per-use<sup>1</sup> basis.



### Empower IT and software-defined environments

- Gain infrastructure that composes physical and virtual compute, storage, and fabric pools into any configuration for any application with HPE Synergy
- Scale up quickly with a software-defined approach that reduces the need to manually configure compute resources
- Use it for virtual, containerized, hybrid cloud, and DevOps environments

### Fuel business operations

- Establish a software-defined, intelligent compute foundation with HPE Proliant and HPE Apollo servers
- Achieve reliable performance with equipment that's fast and easy to deploy
- Use it for back-office applications, as a foundation for hybrid clouds, backup and archive

### Power your data-driven applications

- Balance data-intensive storage and robust compute resources with HPE Proliant and HPE Apollo servers
- Increase IT productivity with integrated, high-performance equipment that is easily serviceable
- Use it for big data, analytics, software-defined storage, data-intensive workloads

## Reap Business and IT Value

- Achieve control**  
Compliance, security, and performance in your own environment
- Get up and running quickly**  
From order to delivery in as little as 14 days with scalable capacity to handle growth and spikes in demand
- Trim costs**  
Pay-per-use model that avoids upfront capital expense and overprovisioning
- Gain IT efficiency**  
Infrastructure that's managed for you, with options to extend management services throughout your hybrid IT estate

<sup>1</sup> Reserve may apply

a00099070enw, June 2020

© Copyright 2020 Hewlett Packard Enterprise Development LP. The information contained herein is subject to change without notice. The only warranties for Hewlett Packard Enterprise products and services are set forth in the express warranty statements accompanying such products and services. Nothing herein should be construed as constituting an additional warranty. Hewlett Packard Enterprise shall not be liable for technical or editorial errors or omissions contained herein.