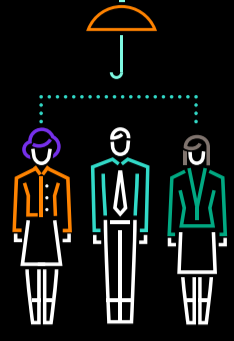


HELPING BUSINESSES RETURN TO WORK HPE POINTNEXT SERVICES



A DRAMATICALLY DIFFERENT WORKPLACE AWAITS AN EDGY WORKFORCE

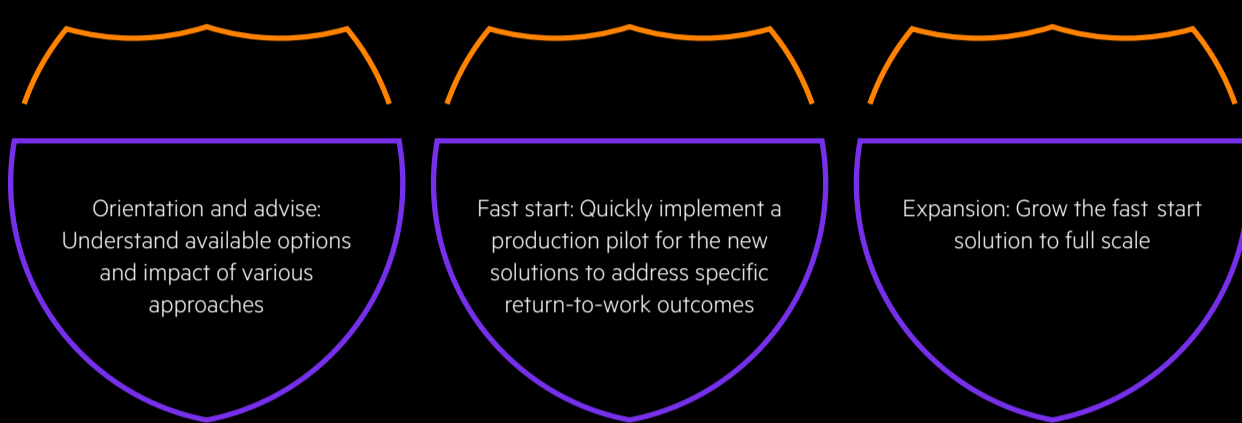
As many stay-at-home orders begin to expire, you're confronted with the complexities of returning your employees to work in a manner that's safe and ensures business continuity.

BEGIN YOUR RETURN-TO-WORK CONVERSATION WITH HPE POINTNEXT SERVICES

The HPE Pointnext Services return-to-work program leverages a series of IoT-based solutions targeting social-distance tracing and tracking, fever detection, location-based alerts, and more to help you create a safe work environment for your employees.



A FRAMEWORK FOR SAFE RETURN TO WORK AMID MOUNTING DISRUPTION



RECONFIGURE YOUR WORKPLACE FOR SAFE DISTANCING WITH FIVE KEY HPE SOLUTIONS



1 SOCIAL-DISTANCE TRACING AND TRACKING

- Implement and manage social-distancing guidelines in physical locations with three solutions:
 - Proximity alerting: Alarm and alert if employees are not complying with social-distancing guidelines
 - Location tracking: Determine locations of specific employees
 - Contact tracing: Determine the contact and proximity history of individual employees
- Well-defined architecture leveraging video surveillance, Bluetooth® Low Energy (BLE), and other technologies
- Working solutions with partners such as RealNetworks and Kognition
- Support for solutions created with a preferred local partner



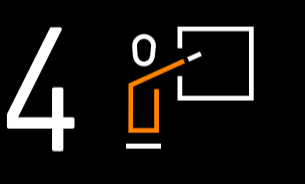
2 TOUCHLESS ENTRY

- Create a hygienic, low-congestion mechanism for employees to securely and smoothly enter a location with three solutions:
 - Facial recognition for contactless access
 - Multifactor access control
 - Identity verification
- Distinct offerings using video surveillance and other technologies
- Joint offerings with partners such as RealNetworks, Kognition, and others
- Support for solutions created with a preferred local partner



3 FEVER DETECTION

- Create a non-intrusive, low-touch mechanism for detecting and tracing body temperature
- Solution leverages thermal cameras
- Joint offerings with Kognition and VENZO Secure



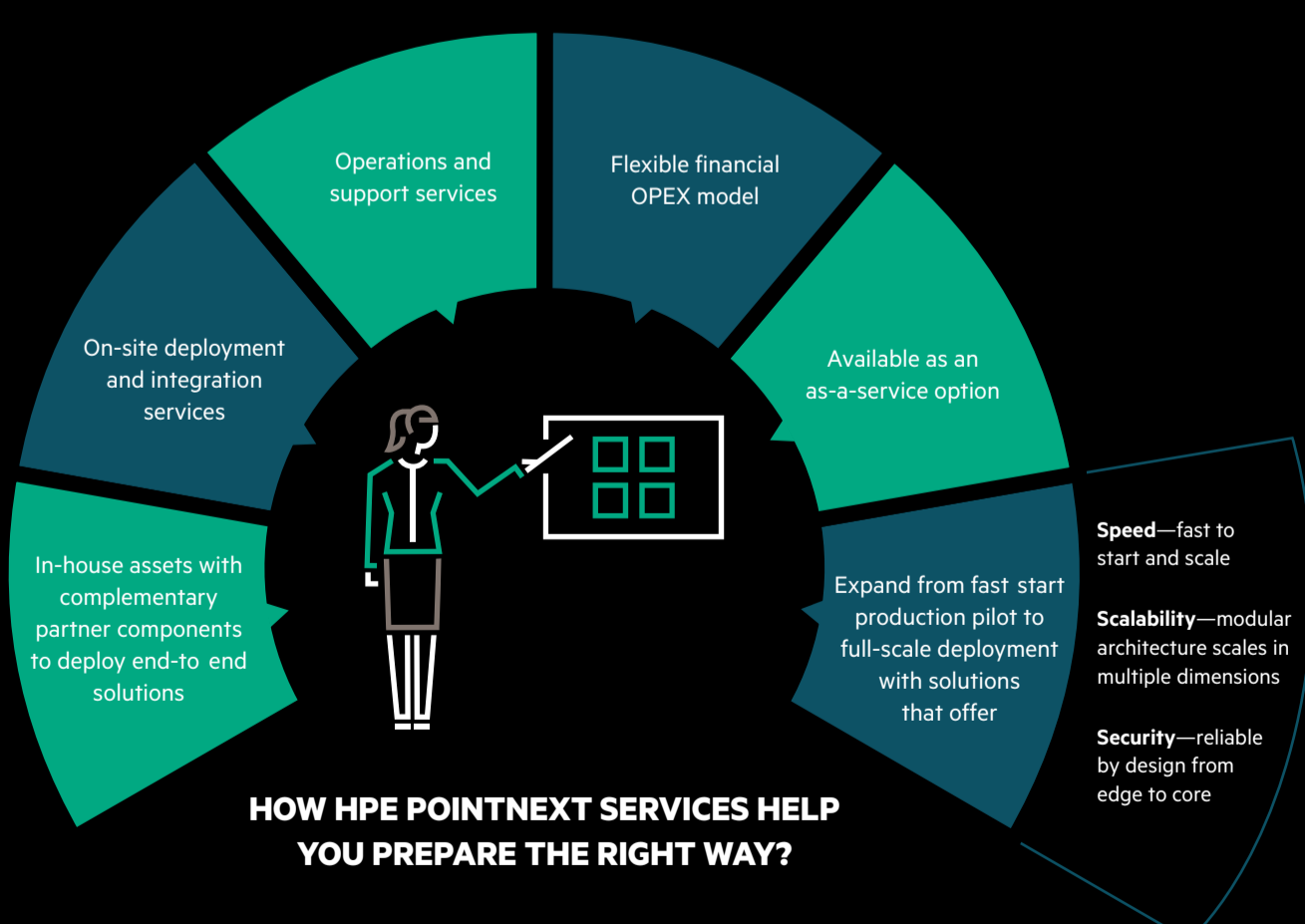
4 AUGMENTED REALITY AND VIRTUAL REMOTE GUIDANCE

- Empower employees with remote expert assistance through augmented reality (AR) capabilities and virtual remote guidance
- Collaborate effectively with remote employees to undertake complex maintenance operations such as troubleshooting a gas valve
- Two distinct working solutions: an AR solution in partnership with PTC and the HPE Visual Remote Guidance (VRG) solution—a secure, enterprise-ready collaboration solution using live, visually guided interactive sessions with extended teams
- Support for solutions created with a preferred local partner



5 WORKPLACE ALERTS AND INFORMATION SHARING

- Share workplace information and push alerts to employees in a specific building location using apps and dashboards
- Part of Intelligent Workplace as a service delivered by HPE Pointnext Services
- Caters to standalone requirements for an app and dashboard for information sharing in a given location
 - Deployed remotely; includes several employee engagement tools such as site news, notifications, and more
 - One stop shop for resources with simple links to key information and corporate/wellness apps
- Ongoing collaboration with partners to broaden capabilities



Helping your employees return to work safely and worry-free amid the current health crisis is no mean feat. Start with a framework from HPE Pointnext Services comprising operational solutions to promote effective health and social distancing practices.

To learn how HPE technology and teams are helping customers and communities combat the current health crisis, visit [HPE COVID-19 response](#).

LEARN MORE AT

hpe.com/us/en/solutions/business-continuity.html

SHARE

